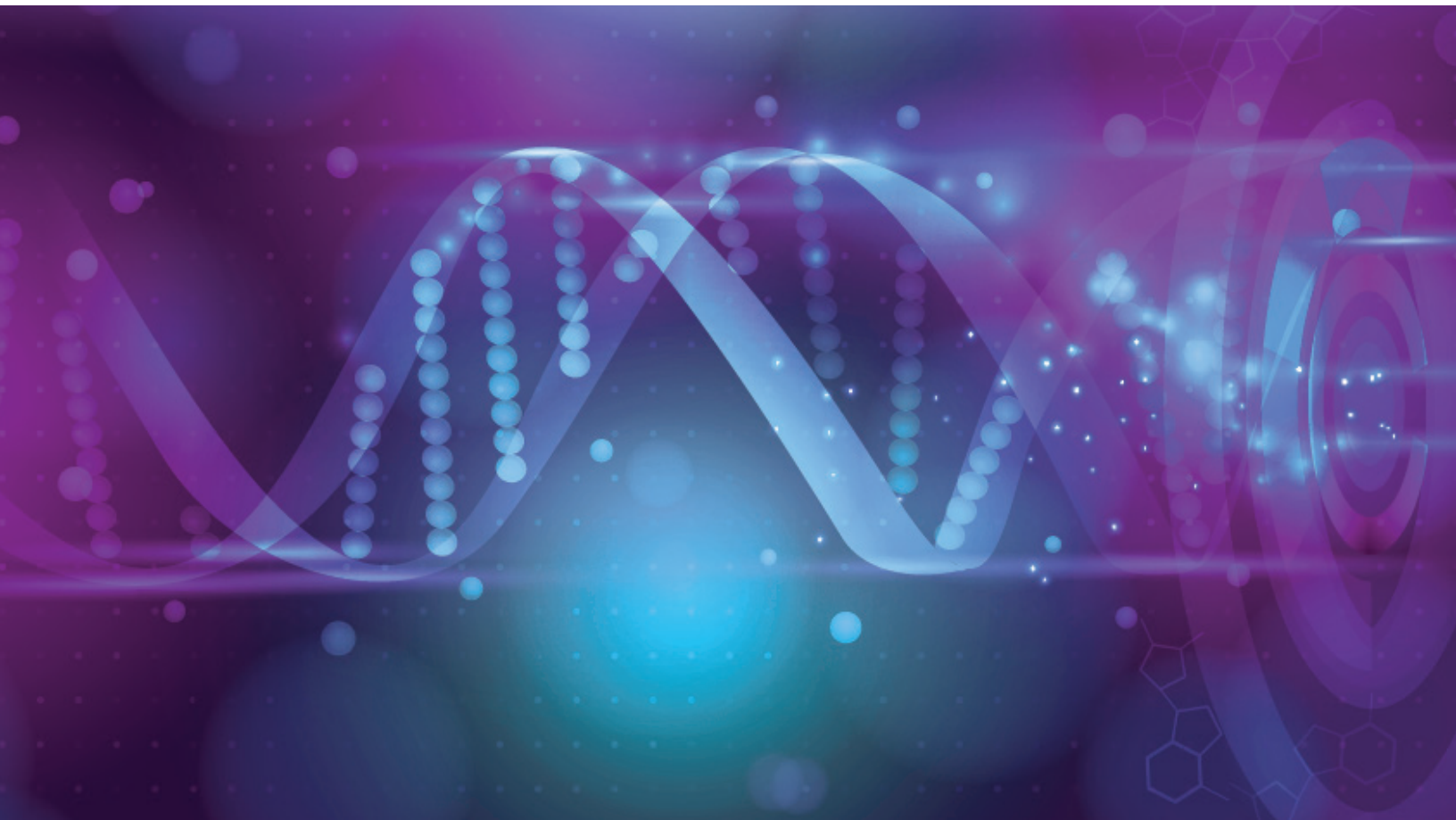


INSPIRE



THE SCHOOL OF NURSING AND HEALTH SCIENCES
AT ROBERT MORRIS UNIVERSITY



RMU.EDU/SNHS

MESSAGE FROM THE DEAN



NADINE ENGLERT, PHD, RN
Interim Dean
School of Nursing
and Health Sciences

At the Robert Morris University School of Nursing and Health Sciences, our students are equipped with the knowledge and skills essential to their respective professions. Our programs emphasize the importance of effective communication and teamwork as the foundation for thriving in today's complex healthcare environment.

We have been co-creating excellence in education since 2003 with our expert faculty, successful alumni, strategic advisory board members, clinical partners, and top-notch students. The school's programs in nursing, nuclear medicine technology, and health services administration are taught by faculty who are widely recognized as expert educators, specialized clinicians, and healthcare leaders.

Our world-class facility, Scaife Hall, features the Regional Research and Innovation in Simulation Education (RISE) Center, where students gain both competence and confidence as they practice and perfect their skills before entering the clinical setting. The school now enrolls 850 students in bachelor's, master's, and doctoral programs and continues to grow. Creative new majors, minors and certificate programs are being introduced, including a combined MSN/MBA degree and a re-envisioned MSN in Leadership degree with five specialty tracks ready to launch in Fall 2018.

Our accredited and ranked academic programs, nationally recognized fellows on the faculty, and over 400 clinical affiliates help to ensure that the school is well positioned to prepare the next generation of nurses, nuclear medicine technologists, and healthcare leaders.

This magazine highlights a few of our School of Nursing and Health Sciences success stories. I am so proud they chose RMU to pursue their education in the healthcare field. And I have every confidence they will inspire another generation of healthcare providers, leaders, and educators.



- 96 percent NCLEX–RN licensing exam pass rate, with over 400 clinical and internship affiliations
- 21 percent of faculty members are nationally recognized fellows
- Nationally ranked in *U.S. News & World Report* Best Colleges, Best Online Bachelor's, and Best Online Graduate Nursing

SCHOOL OF NURSING AND HEALTH SCIENCES

“The health services administration program at RMU competes with major nursing schools and produces fine graduates.”

DANNY MOORE wants to improve healthcare delivery, not only in the United States, but for people in Nicaragua too. As the systems engineer lead for the Mitre Corp., a nonprofit corporation that operates federally-funded research centers supporting several government agencies, Danny applies lessons he has learned in a 30-year career in process improvement in order to improve results in the highly complex healthcare arena.

As a student in RMU's fully online master's degree program in health services administration, he took the opportunity to accompany students and faculty on their study abroad program in Nicaragua, observing hospitals and clinics that typically lack the equipment and resources of U.S. facilities.

Taught by experienced faculty and working healthcare professionals, the online program allowed Danny to earn his degree at his own pace and on his own time while working full time and traveling. He had access to leaders in healthcare administration, lectures online, and discussions with experts in the field. Personal interaction with peers in his diverse cohort provided further valuable knowledge and skills.

The School of Nursing and Health Sciences is a leader in the field of online education. Programs are highly individualized, innovative, and flexible to meet the needs of many types of students, so more people like Danny can help to solve healthcare problems both globally and in their communities.



ANGELA BIRES, EDD, MPM, RT(N), CNMT, FSNM-TS
Professor of Nuclear Medicine Technology
Nuclear medicine technology, curriculum development, student counseling



LYNDA J. DAVIDSON, PHD, RN
Professor of Nursing
Program evaluation, nursing education, technology in teaching



TERRI L. DEVEREAUX, PHD, MPM, FNP-BC
Associate Professor of Nursing
Rural and underserved health, health center design and operations, collaborative communication



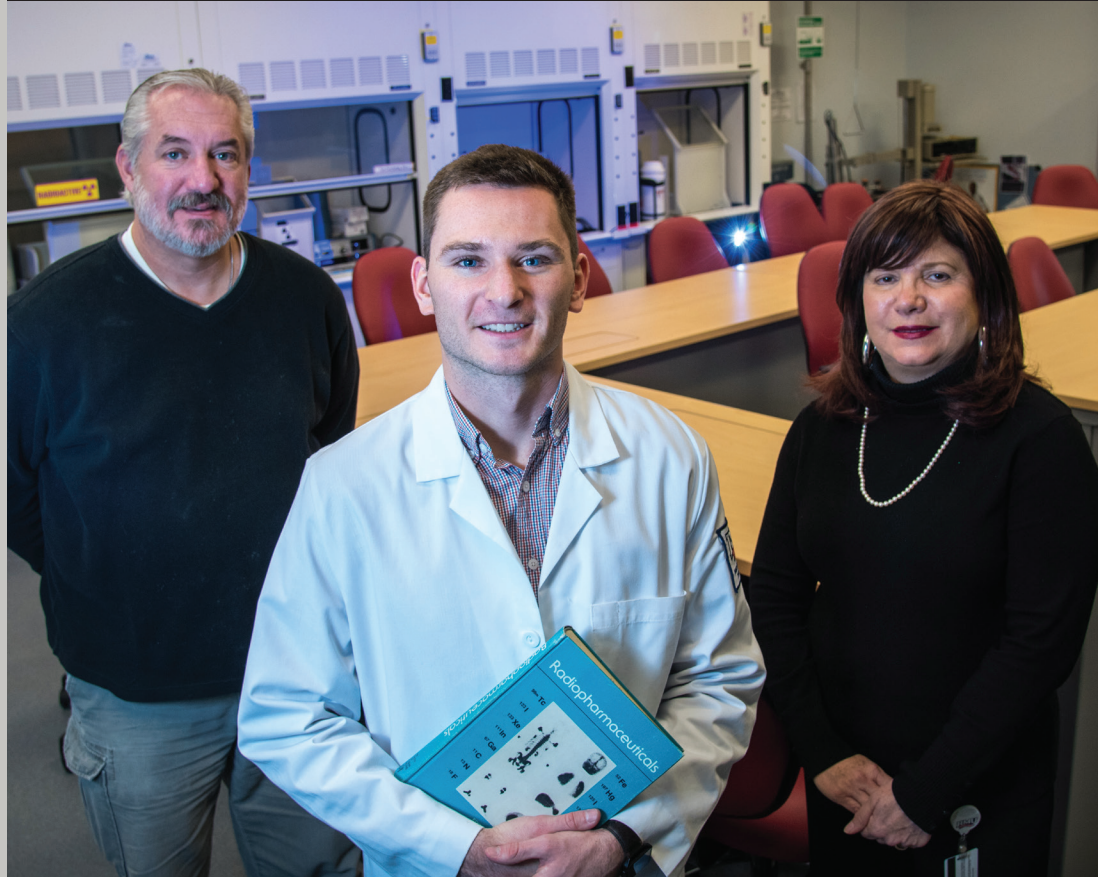
NADINE ENGLERT, PHD, MSN, RN
Professor of Nursing
Curriculum development, program evaluation, leadership



STEPHEN FOREMAN, PHD, JD, MPA
Associate Professor of Nursing
Healthcare markets, nursing regulation, income inequality and health



DIANE FRNDAK, PHD, MBA
Assistant Professor of Health Services Administration
Leadership, quality and patient safety, process improvement



“I look forward to every day because there is always something exciting and different going on.”

AMANDA IFILL has wanted to be a nurse since the ninth grade. After deciding that the college where she initially enrolled was not quite meeting her needs, she transferred to RMU, attracted by its individualized focus and innovative programs. The school’s simulation labs allow nursing students to practice their skills on high-tech mannequins or with trained actors. For students like Amanda, simulation provides a valuable opportunity to put into action all that they have learned in their classrooms in a safe and low-pressure environment.

Since transferring, Amanda has taken full advantage of her new situation. She has made the dean’s list and has become a leader in her sorority, on the dance team, and in the nursing

school. Amanda is one of 10 students chosen to participate in a federally funded program to broaden workforce diversity in healthcare and promote success in nursing programs.

The Regional Research and Innovation in Simulation Education (RISE) Center at Robert Morris University is a major regional educational resource and a center of excellence for simulation training and research. Led by internationally recognized faculty and specially trained simulation specialists and technicians working side by side with healthcare organizations throughout the region, the RISE Center creatively broadens the educational experience of health sciences students by maximizing their learning opportunities.

“I am a purposeful person, and this school gave me purpose.”

ANDREW BIRK stretched beyond his studies as a nuclear medicine technology major at the School of Nursing and Health Sciences, and people noticed. He received the university’s 2017 Presidential Transformational Award, given annually to one graduating senior who has been transformed personally and has contributed to the transformation of the university in a meaningful way.

Andrew founded the campus chapter of Bringing Hope Home, a nonprofit that works to give emotional and financial support to families struggling with a cancer diagnosis. Bringing Hope Home won \$10,000 from the Pittsburgh Penguins Foundation for its #Pens4Purpose social media contest. Andrew also served as a

community advisor for residence life, was in Alpha Chi honor society, and made dean’s list every year. He presented his published research at a conference and passed his nuclear medicine certification exam before graduating. With that record, as well as an internship at the Cleveland Clinic, it is not surprising that Andrew has had several job offers. Now he is working full time at a large hospital while enrolled in RMU’s health services administration online program as a graduate student.

The School of Nursing and Health Sciences encourages students to be more than their majors. Participating in athletics, leading student organizations, and studying abroad all help to shape graduates into great employees and compassionate and caring individuals.



SUZAN E. KARDONG-EDGREN, PHD, RN, ANEF, CHSE, FAAN, FSSH
Professor of Nursing
Simulation, leadership, nursing education



JUDITH KAUFMANN, DRPH, CRNP, FNP-BC
Associate Professor of Nursing
Primary care, nurse practitioner education, public health



MICHAELNE KING, PHD, MSED, MSN, CNE, RN
Assistant Professor of Nursing
Community health nursing, nursing education, nursing ethics



LISA W. LOCASTO, DNP, RN, CNS
Assistant Professor of Nursing
Pediatric primary and acute care, childhood obesity and weight management



DONNA MASON, MS, CNMT, NMTCB(RS), RT(N)
Assistant Professor Nuclear Medicine Technology
Positron emission tomography, radiation safety, imaging



BETSY GUIMOND, PHD, WHNP-BC
Assistant Professor of Nursing
Women’s health, program evaluation, simulation



HOLLY HAMPE, DSC, MHA, MRM, RN
Assistant Professor of Health Services Administration
Leadership, patient safety and quality improvement, online synchronous simulation



JILLIAN HARRINGTON, EDD, CCS, CCS-P, CPC, CPC-P, CPC-I, CEMC, MHP
Assistant Professor of Health Services Administration
Healthcare compliance, revenue cycle and reimbursement, health policy and wellness



SUSAN HELLIER, PHD, DNP, FNP-BC, CNE
Professor of Nursing
Women’s health, evidence-based practice, nursing education



KIRSTYN KAMEG, DNP, PMHNP-BC
University Professor of Nursing
Psychiatric nursing, simulation, interprofessional education



JESSIE KAMERER, EDD, MSN, RNC-NIC, CHSE
Assistant Professor of Nursing
Nursing education, technology and simulation, faculty development



“I want to make a difference.”

EMMA WILSON lights up when she talks about her desire to make a difference. Whether it is caring for patients in a world-class healthcare facility in Pittsburgh, working with her fellow students and peers in the School of Nursing, or delivering healthcare in a Central American barrio, Emma is changing others’ lives as well as her own.

The senior nursing major is an honors student, a patient care assistant, and a peer mentor in the School of Nursing and Health Sciences’ SMART and LEAD programs. Emma credits the school’s supportive faculty for helping prepare her for her future as a nurse. Her professors have rewarded her hard work, selecting her to represent RMU at the American Association of Colleges of Nursing national student policy summit in Washington.

One of Emma’s most memorable experiences has been her participation in RMU’s longstanding study abroad program with the Universidad Politecnica de Nicaragua. The experience enabled her to not only contribute medical supplies and her own hands-on assistance to clinics in poor neighborhoods, but also to gain valuable experience working with underserved populations. She also gained a global perspective on healthcare.

Study abroad and service learning opportunities in Scotland, China, Australia, and Nicaragua allow students like Emma to develop cultural awareness and improve listening skills — all of which leads to their becoming well-rounded and responsive practitioners who make a difference every day.

“My former teacher at RMU is now a collaborator and friend. I believe she trusts my judgment and values my opinions.”

JENNIFER BOWMAN was working as a staff nurse at a local hospital when she began to look for a career path that would take her in new directions. Familiar with the role of a nurse practitioner, she did not know about mental health nurse practitioners until her sister, a nursing student, told her about the Doctor of Nursing Practice in mental health degree program at the School of Nursing and Health Sciences.

Jennifer found her passion and focus through mentorships with faculty members who are nationally recognized leaders in their field. The accredited and rigorous program at RMU also offered flexibility and gave her a comfort level with instructors and fellow students that helped her to combine school with working, which suited her needs for continuing professional development.

Jennifer now works with one of her former instructors in a clinical setting and values their collaborative environment. She is confident in her role as a mental healthcare practitioner and believes the program prepared her well.

Robert Morris University’s nationally ranked BSN-DNP degree is clinically oriented, preparing nurse practitioners to employ reasoning at the highest level of nursing practice to plan and implement patient care. Graduates have a strong, practice-oriented preparation to work within teams of health professionals, care for diverse populations, and provide safe, high-quality healthcare. Taught by faculty who continue to practice clinically and who emphasize teamwork and professional collaboration, the DNP program is at the forefront of advanced nursing practice.



CARL ROSS, PHD, FNP-BC, CNE, FAANP, CRNP
University Professor of Nursing
Nursing education, international education, care of older adults



JANICE SARASNICK, PHD, MSN, RN, CHSE, CHSOS
Assistant Professor of Nursing
Nursing education, simulation, emergency/pediatric nursing



JANENE SZPAK, DNP, RN, CRNP, PMHNP-BC
Associate Professor of Nursing
Psychiatric nursing, nursing education, simulation



WILLIAM WENTLING II, DSC, MS, RT(R)(N), CNMT
Assistant Professor of Nuclear Medicine Technology
Radiologic technology, nuclear medicine, radiopharmacy



SHAMIKA ZYHIER, PHD(C), MSN, RN
Assistant Professor of Nursing
Medical and surgical, cardiothoracic post-surgical care, nursing education



DONNA MCDERMOTT, PHD, RN, CHSE
Assistant Professor of Nursing
Nursing education, simulation, prebriefing



JOYCE OTT, DNP, CNS, RN-BC
Assistant Professor of Nursing
Psychiatric nursing, nursing education, faith community nursing



KATRINA PYO, PHD, RN, CCRN
Associate Professor of Nursing
Medical, surgical, and critical care nursing; policy development



DENISE RAMPONI, DNP, FNP-C, ENP-BC, FAANP, FAEN
Associate Professor of Nursing
Emergency, simulation, leadership



MARGARET RATEAU, PHD, RN, CNE
Assistant Professor of Nursing
Nursing education, creative teaching strategies, disaster relief nursing



LUANN RICHARDSON, PHD, DNP, FNP, PMHNP, FAANP
Associate Professor of Nursing
Psychiatric nursing, advanced practice issues, integrated practice

UNDERGRADUATE PROGRAMS

Health Services Administration

Nuclear Medicine Technology

Nursing

GRADUATE PROGRAMS

Health Services Administration

Nursing Education

Doctor of Nursing Practice



School of Nursing and Health Sciences

Robert Morris University
6001 University Boulevard
Moon Township, PA 15108-1189

RMU.EDU/SNHS