



RMU Trees Network November 2023 Newsletter

December 4 Family/Parent Support Meeting

Are you / your loved one registered with your county office and working with a Supports Coordinator (SC)? Are you / your loved one planning toward participating in a PA Office of Developmental Programs (ODP) waiver? Join us and Mary Evrard, Community and Communications Liaison Coordinator, for a conversation about

- Creating a robust Individual Support Plan (ISP) and PUNS (Prioritization of Need) Form including preparation for transitioning from high school to adult life.
- ODP Consolidated, Community Living (CLW) and Person Family Directed Support (PFD) Waivers.
- What home and community-based services may be available through those waivers, how they are delivered, and who provides them.

Reference will be made to the ODP Gold Book. The Gold Book is intended to be a comprehensive guide for families as they enter and navigate the ODP service system.

<https://home.myodp.org/2023/07/14/odp-reissues-the-gold-book/>

Introduction to Allegheny County Office of Developmental Supports (ODS).

www.alleghenycounty.us/Human-Services/About/Offices/Developmental-Supports.aspx

Anyone interested in learning more can register for the virtual meeting by contacting Vicki Donne at donne@rmu.edu or Deanna Hiltz at hiltzd@rmu.edu or completing the following form: [Registration Form](#)

November 6 Supports Coordination and Waiver Funding Meeting Summary



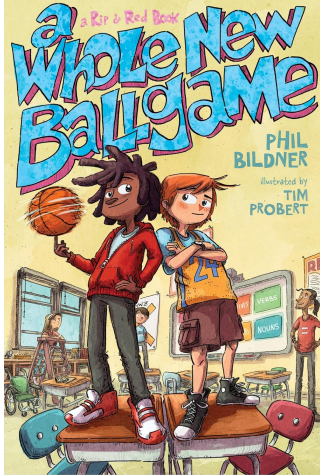
On Monday, November 6 our RMU Trees Network held its monthly parent/family meeting on supports coordination and waiver funding. Mary Evrard, Allegheny County Department of Human Services Office of Developmental Supports Community and Communications Liaison, joined us and shared her expertise and



provided several resources on supports and services in our region, how to connect with a support coordinator to aid in transitioning, and how to obtain access to waiver funding.

Virtual Book Club

Starting Tuesday, January 9 from 6 pm - 7 pm



We have picked the book **A Whole New Ballgame** by Phil Bildner for our next book club. The main characters, Rip and Red, are 5th grade best friends. They have a new teacher and basketball coach who is a bit unconventional. Rip is out of his comfort zone, and Red, who has autism, doesn't like change and likes things done in a certain way. Let's read to find out how these two friends help each other find ways to make a difference in this fun book about school, sports, and friendship. This book is recommended for children ages 8-12 or grades 4th-6th but is a great read for all ages. ***A hard copy of the book will be provided to all participants who register by Wednesday, December, 20, 2023.***

Sign up by emailing Deanna Hiltz at hiltzd@rmu.edu

Survey of Technology and AT



Drs. Hansen and Donne are conducting research on classroom technology and assistive technology use by PA special education teachers. We're seeking your input to improve our knowledge of current practices. Your insights will inform the field and help us enhance the support we provide to both educators and students with disabilities. Please take a few minutes to complete our survey, found at this link: <https://www.surveymonkey.com/r/TechRMU> or through this QR code



This study has been approved by RMU IRB (412-397-6227 or irb@rmu.edu). If you have any questions, you can contact the researchers at hansen@rmu.edu or donne@rmu.edu

Resources for Parents and Educators

The Network provides resources for parents and teachers and these resources can be found at the [RMU Trees Network Website](#) . Information on RMU Trees is also posted on the RMU website and the previous newsletters can be read and viewed at <https://www.rmu.edu/academics/provost/trees>. In each



newsletter we provide links to resources of topics discussed in our parent meetings and workshops as well as other information that may be helpful to families, schools, and the community. These were some of the websites shared at our November 6th meeting on Supports Coordination and Waiver Funding.

Southwest PA United Way 211 [Home \(pa211sw.org\)](http://pa211sw.org) PA 211 Southwest is part of the national 211 Call Centers initiative that seeks to find health and human services for everyday needs and in crisis situations.

PA Elks Home Service Program [Contact Us – PA Elks Home Service Program](#) PA Elks Home Service Program provides support and advocacy services to individuals of any age who have a developmental disability.

Office of Developmental Supports [DHS Offices | Office of Developmental Supports | Allegheny County](#) The Allegheny County Department of Human Services (DHS) Office of Developmental Supports (ODS) registers eligible Allegheny County residents with Intellectual Disability (ID), Autism, Developmental Disability (DD), and Medically Complex Condition (MCC) to connect them to Supports Coordination and other support services.

PA Link to Community Care [PA Community Care](#) The PA Link to Community Care website is designed to help persons with disabilities and seniors find information that will connect them to supports and services in their community. We hope that this site will help you or a loved one make the best and most informed decisions.

RMU Trees Network Contact

6001 University Boulevard
335 Patrick Henry Trees Network Office Suite
Moon Township, PA 15108

Vicki Donne, RMU Trees Network Director,
University Professor, Education Department, SNEHS
donne@rmu.edu
412-397-5465

Deanna Hiltz, RMU Trees Network Outreach Specialist, Part-Time Faculty
hiltzd@rmu.edu
412-397-6058

[RMU Trees Website](#)
<https://www.facebook.com/RMUtrees/>

